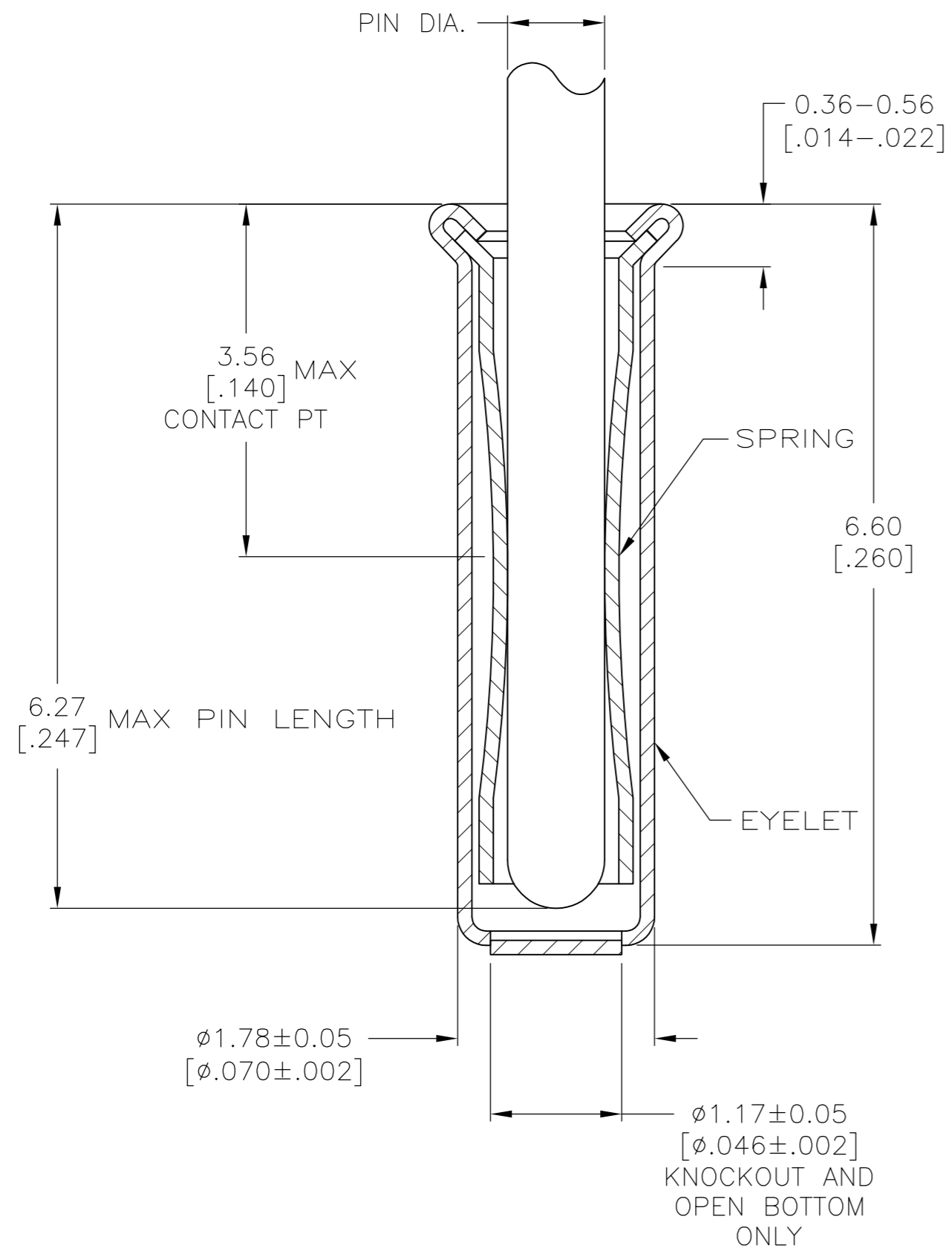
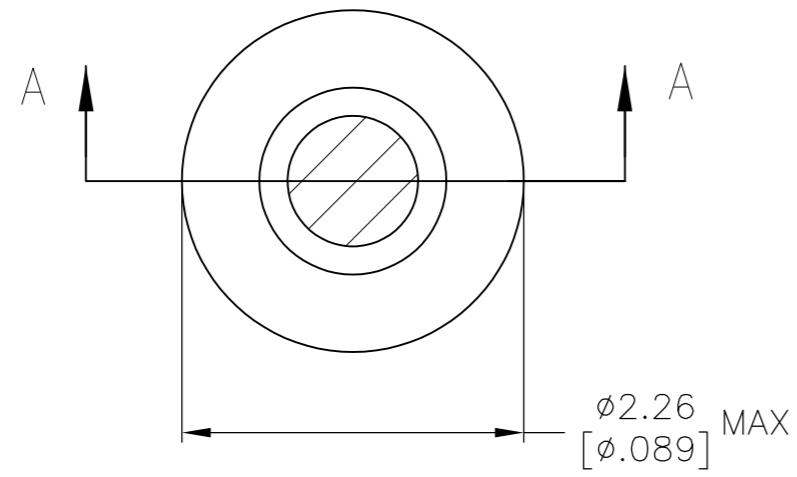


THIS DRAWING IS UNPUBLISHED. RELEASED FOR PUBLICATION
 © COPYRIGHT - By - ALL RIGHTS RESERVED.

| LOC | | DIST | | REVISIONS | | | |
|-----|----|------|-----|---------------------------|---------|-----|------|
| GP | 00 | P | LTR | DESCRIPTION | DATE | DWN | APVD |
| | | AG3 | | REVISED PER ECO-11-004835 | 11MAR11 | RK | HMR |



- 1. TIN PER MIL-T-10727 OR TIN LEAD .000254 [.000100] MIN THK.
- 2. NICKEL UNDERPLATE ALL OVER, MATING SURFACE PLATED TO MEET PERFORMANCE REQUIREMENTS OF TE CONNECTIVITY PRODUCT SPECIFICATION 108-14008.
- 3. GOLD FLASH PER MIL-G-45204, TYPE II, $0.13\mu m$ [.000005] MIN THK. OVER NICKEL PLATE PER QQ-N-290 $0.51\mu m - 1.52\mu m$ [.000020-.000060] EXT THK.
- 4. GOLD PER MIL-G-45204, TYPE II, 0.00127 [.000050] MIN THK OVER NICKEL PLATE PER QQ-N-290. 0.00127 [.000050] MIN EXT THK
- 5. RECOMMENDED HOLE SIZE, PLATED OR UNPLATED:
 MACHINE INSERTION: $1.83 \begin{matrix} +0.10 \\ -0.08 \end{matrix}$ [$.072 \begin{matrix} +.004 \\ -.003 \end{matrix}$]
 HAND INSERTION: $1.83 \begin{matrix} +0.10 \\ -0.00 \end{matrix}$ [$.072 \begin{matrix} +.004 \\ -.000 \end{matrix}$]
- 6. APPLICATION TOOL PART NUMBER:
 MACHINE NO. 682127-5
 INSERTION HEAD NO. 682039-4
- 7. TO INSURE PROPER SPRING TENSION DO NOT EXCEED A 0.05 [.002] DIFFERENCE IN PIN DIA WHEN CHANGING TO A SMALLER PIN.
- 8. BOTTOM PLUG KNOCKOUT TOOL PART NUMBER 69729 WITH TIP PART NUMBER 69728-2.
- 9. TIN PER ASTM B 545, .000254 [.000100] MIN THK.
- 10. MATERIAL: SPRING: BERYLLIUM COPPER QQ-C-533
 EYELET: COPPER, QQ-C-576
- 11. GOLD PER MIL-G-45204 TYPE II, 0.00076 [.000030] MIN THK OVER NICKEL PLATE PER QQ-N-290 0.00127 [.000050] MIN THK OF CONTACT AREA.

| | | | | | |
|------------------|-------------|------------------------|--------|---------|-----------|
| | KNOCKOUT | | TIN 9 | TIN 9 | 6-50865-7 |
| | OPEN | | GOLD 4 | GOLD 11 | 6-50865-6 |
| | | | GOLD 4 | GOLD 2 | 1-50865-2 |
| | | | | | 1-50865-1 |
| SUPSD BY 50865-5 | | | | | 1-50865-0 |
| OBSOLETE | CLOSED | | | | 50865-8 |
| OBSOLETE | KNOCKOUT | 0.86-1.04 [.034-.041] | TIN 1 | TIN 1 | 50865-7 |
| | OPEN | | | | 50865-6 |
| | CLOSED | | | | 50865-5 |
| OBSOLETE | OPEN | | GOLD 3 | | 50865-4 |
| OBSOLETE | | | TIN 1 | GOLD 2 | 50865-3 |
| | KNOCKOUT | | GOLD 3 | | 50865-2 |
| OBSOLETE | | | TIN 1 | | 50865-1 |
| | CLOSED | | GOLD 3 | | 50865 |
| NOTES | BOTTOM TYPE | RECOMMENDED PIN DIA. 7 | EYELET | SPRING | PART NO |

SECTION A-A

THIS DRAWING IS A CONTROLLED DOCUMENT. DWN R. TALLEY 4-5-91
 CHK -
 APVD -
 PRODUCT SPEC -
 APPLICATION SPEC -
 WEIGHT -
 CUSTOMER DRAWING

STE TE Connectivity
 MINIATURE SPRING SOCKET ASSEMBLY
 SERIES 4

SIZE A2 CAGE CODE 00779 DRAWING NO C=50865 RESTRICTED TO -
 SCALE 1:1 SHEET 1 OF 1 REV AG3